

FLEET MANAGER

FLEET MANAGEMENT SOFTWARE

WHY FLEET MANAGER

DATA INTEGRATION

All information relating to fleet management is entered into the system and always under control.

IMMEDIACY

View the planning and restoration history of each vehicle and consult the calendar of available models on the graphic timeline.

STATISTICS

Export reports on fleet operation. The tabular and graphical views of the reports are always available on the dashboard.

GEOLOCATION

GPS tracking and filter by car model in case of urgent requests.

AUTOMATIC ALERTS

Automatic reporting email in case of delays in data reception.

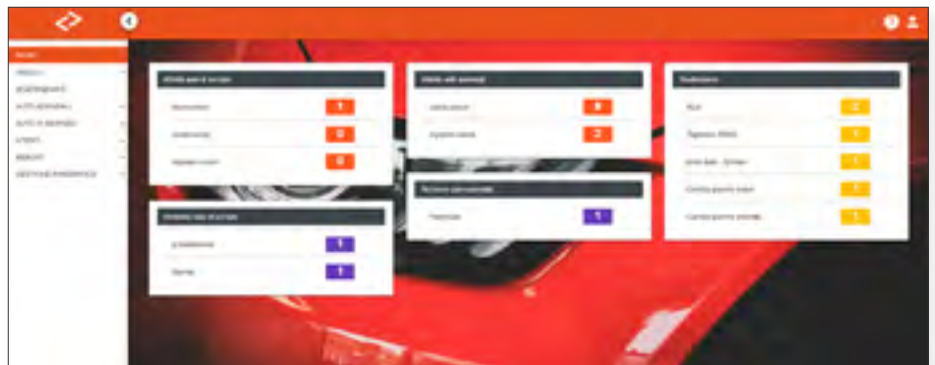
PROFILING

Access and functionality profiled based on the user.

Fleet Manager is a digital tool that collects all the data of medium and large company fleets in one safe place.

The software tracks vehicles, detects real-time location and monitors due dates, income, expenses, fuel and maintenance costs, mileage and much more. Furthermore, Fleet Manager helps you to better organize the business trips of managers, employees and collaborators and to import and export all the documentation necessary for the complete management of the company fleet and company cars.

Fleet Manager is customizable according to your business workflow.



Fleet Manager Dashboard

FLEET MANAGER IN NUMBERS*



-30% CO2 EMISSIONS



+40% VEHICLES OPTIMIZATION



-12% DAMAGES & REPAIRS



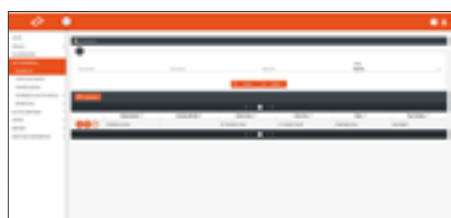
+1 MLN FINES RECOVERY



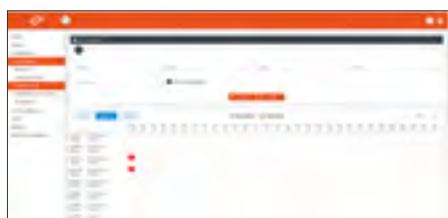
-13 HOURS/DAY INTERNAL E-MAIL EXCHANGE FOR FLEET MANAGEMENT

*Dati estrapolati dai Fleet Manager in uso presso tre importanti case automobilistiche clienti.

AUTHORIZATION FLOW



Requests: table of requests for company vehicles from employees. The information can be filtered by type of request, time range and status of the request. Here the planning of exits/entries of park vehicles takes place.

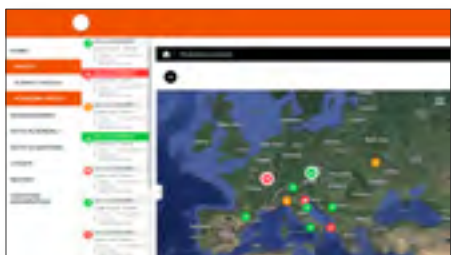


Schedules: virtual garage that provides an overview of scheduled, ongoing and completed requests for vehicles identified by model and chassis. Any repairs in the workshop are also visible. The data can be filtered by model, license plate, chassis, request and name of the applicant.



Restorations: list of vehicles entering and leaving the workshop for maintenance, damage repair and restoration activities. The table can be filtered by vehicle model, license plate and chassis.

INTEGRATED GPS



Fleet Manager has an integrated GPS tracking system to guarantee data control relating to geolocation, real-time reporting of breakdowns or any accidents, information on the drivers' driving style, etc.

Thanks to a series of additional features, GPS devices guarantee widespread control of the car fleet and even more strategic and optimized management of the vehicles.

CONTATTI

TESISQUARE SPA

www.tesisquare.com
mail@????.it
+39 0172 476301

PERITUS SRL

www.ptqs.it
info@ptqs.it
049 8705826



QR